

3D Intelligent Technology & Service Provider

3D Reconstruction | Reality Capture Hardware | Spatial Computing | Photorealistic Metaverse

Company Introduction

XGRIDS is committed to building more comprehensive 3D spatio-temporal intelligence technology and bridging the physical and digital worlds for a shared future.

With micrometer to kilometer level high-precision 3D reconstruction and intelligent spatial computing capabilities, we provide integrated software and hardware solutions for fast 3D content generation and applications.

X G R I D S

Top-tier Team

The team has in-depth industry and academic background in 3D field. Members are from leading global technology companies, with rich product experience and forward-looking market insights.

Core Technologies

World-leading R&D capabilities: AI spatial intelligence, high-precision multi-scale 3D reconstruction, proprietary Multi-SLAM algorithms, distributed high-performance computing, edge computing and so on.

Product Capabilities

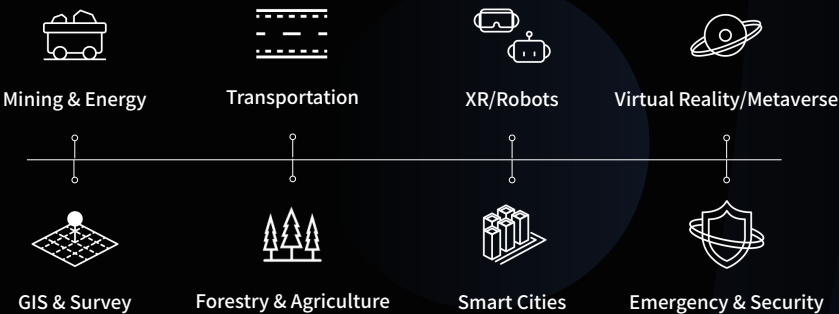
End-to-end software and hardware integrated product solutions, covering the entire value chain from 3D capture, reconstruction, processing to applications.

500+ Customers

30+ Invention Patents

75% R&D Team Members

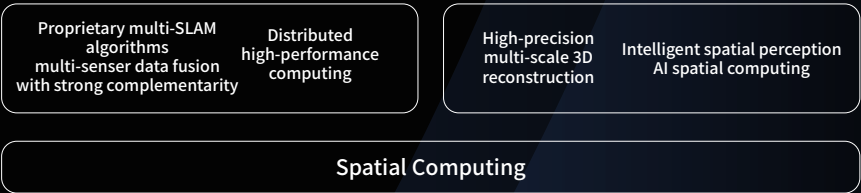
Application Layer



Product Layer



Technology Layer



Precision Redefined

Lixel L Series

Flagship real-time 3D scanner

Lixel L Series integrates LiDAR, visual, and IMU modules with AI technology, it achieves breakthroughs in real-time data quality and usability. With improved real-time point cloud data matching the post-processed quality, Lixel leads the way into the new “zero post-processing era” for SLAM devices.



Relative Accuracy
 $\pm 1\text{cm}^{[1]}$



Real-time
color point clouds



Ready to use
real-time data



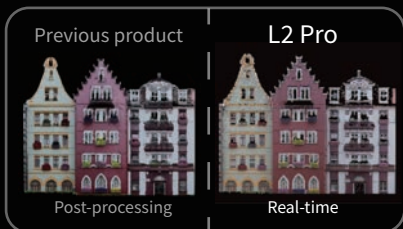
Reliable and Robust



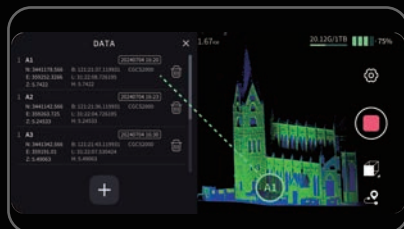
All in one



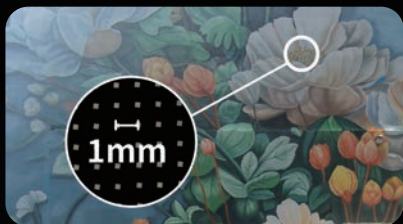
Real-Time
Absolute Accuracy
 $3\text{cm}^{[2]}$



Real-time data comparable to post-processing quality direct output for immediate mapping and modeling.



Real-time absolute accuracy of 3cm.



Exclusive LixelUpSample™ point cloud algorithm denser point clouds, sharper detail.



5mm point cloud thickness enhanced precision for mapping and drawing.

[1] The distance between two points is less than 100 meters

[2] The disconnection distance of the control point/RTK is less than 100 meters.

Compact Yet Powerful

Lixel K1

Compact 3D Scanner

Lixel K1 is XGRIDS' compact handheld scanner. Integrating 48MP x 2 panorama cameras and 360° LiDARs within its body, it generates cm-level colored models for professionals and 3d hobbyists, offering convenient scanning and reconstruction experience.



1kg



Color point cloud
in real-time



360° scanning



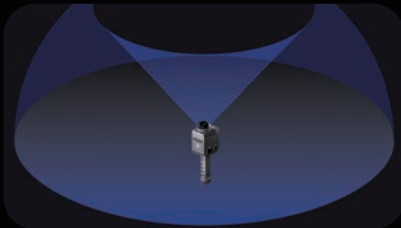
Convenient
operation



With a 1kg body, K1 highly Integrated panoramic vision and LiDAR.



48 MP x 2 imaging provides exquisite real-time true-color point clouds.



360°*360° true panoramic vision, 360° laser horizontal scanning field.



Its low learning cost makes 3D scanning and modeling extremely simple.

Lixel R1

Multi-Sensor Mapping Module

Designed for real-time localization and mapping (SLAM) for robots, Lixel R1 excels in multi-sensor data fusion, real-time mapping, and remote data transmission, providing an unparalleled solution for robots and their operators to quickly grasp environmental conditions. This module empowers robot swarms with enhanced coordination and operational efficiency.



LiDAR/Camera/Infrared



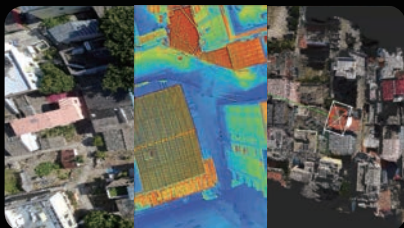
Real-time modeling



Multi-devices collaboration



Remote transmission



R1 performs real-time calculation on board, getting 3D data from laser, infrared, visual sensor and RTK in one operation and merging data seamlessly.



Overlay of online/offline/custom maps displays abundant information, allowing cm-level real-time 3D measurements.



Real-time mapping, data transmission, and environmental awareness ensure coordination and operation of robots fleets in complex scenes.

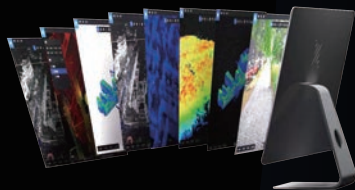


Large data transmitted to ground station in real-time, up to 10km network communication.

LixelStudio

3D Intelligent Processing Software

LixelStudio is XGRIDS' independently developed 3D processing software, providing viewing, editing, and processing services for laser point clouds and other data, along with industry plugins. It covers the entire workflow of data-model-application, bringing breakthrough productivity in 3D data.



One-stop processing



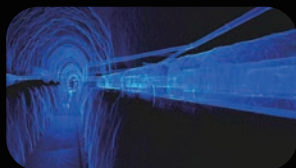
AI empowerment



Remote collaboration

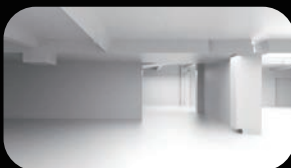


Abundant plugins



Massive Data Loading

It can load massive point clouds on the screen simultaneously, with no pressure on clipping, measuring, and rendering.



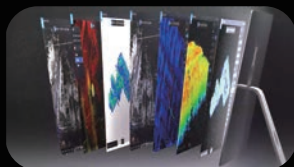
Data Vectorization

CAD, BIM, 3D white model, and other data can be more compact and user-friendly.



AI Spatial Understanding

Monolithic and semantic segmentation, and dynamic object removal truly help to understand the space information.



Industry Plugins

Abundant and expandable plugins meet the data needs of various industries.



Remote Sync

5G network for real-time viewing and downloading make remotely command job dynamics in real-time possible.



Lixel CyberColor

Next-Gen 3D Content Technology Based on Multi-SLAM & 3DGS

Lixel CyberColor (LCC) represents a groundbreaking advancement in 3D content generation. It utilizes a combination of a self-developed Multi-SLAM algorithm and optimized 3DGS technology, allowing users to automatically create ultra-realistic large-scale 3D models.



**Large-scale
modeling**



**Automated
generation**



**Centimeter-level
accuracy**



**Multi-platform
compatibility**



**Advanced
development**

*Compared with the open-source 3DGS algorithm.



Revolutionizing 3D content production, LCC creates vast, lifelike models, overcoming modeling challenges in large spaces and complex environments.



Our local rendering algorithm ensures smooth operation for various platforms, reducing model size by 90%* through proprietary data compression technology.



Lixel spacial camera improves scanning success rates while achieving cm-level precision, enabling on-site measurement and annotation within model scenes.



LCC plugins and SDKs will be available for Unity, UE, Web and Mobile, Empowering unprecedented boundless reproduction of 3D content.

Applications in Industries



Mapping and Surveying

Real-time scanning and modeling hardware and software products reshape the entire surveying and mapping process, 5-10 times improving efficiency in and out of the field.

Real-world 3D

Land-Air Fusion

DEM/DSM



Smart City

Building City BIM/CIM models, integrating above and below-ground spaces data, realize digital management in city lifecycle.

Grid Management

Urban Renewal

CIM/BIM



Emergency Security

Quickly generated on-site 3D models gets real-time feedback of on-site situation, providing data support for emergency command.

Digital Mine

Pile Measurement

Power Inspection



Energy and Mining

Addressing the rapidly changing needs of monitoring in the energy field, our solutions assist in the digitalization and intelligent upgrade of the energy and mining industry.

Digital Mine

Pile Measurement

Power Inspection



XR/Robotics

Integrated perception and algorithm generate real-time spatial maps, providing overall spatial perception and intelligent decision

Spatial Maps

Spatial Intelligence

Instant Localization



Metaverse

Realistic Metaverse space interaction/management solutions make 1:1 reproduction of real space, creating a personalized Metaverse experience.

Realistic Space

Multimedia Presentation

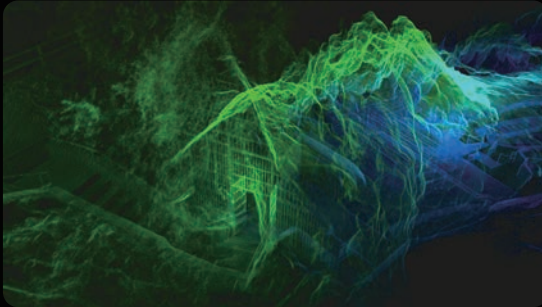
Virtual and Real Combination

Customer Cases



China Cultural Media Group Cultural Tourism Metaverse Platform

Metaverse

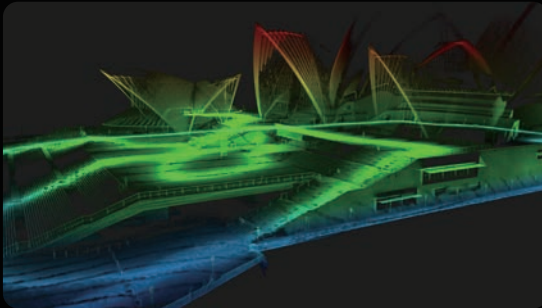


Underground River Digital Art Image Project and CaveEntrance 3D Theater Engineering

Digital Twins of Caves

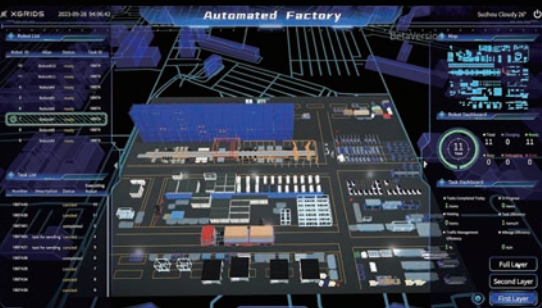


[Learn more](#)



Sydney Opera House

Scan to BIM



Unmanned Factory Management System

Digital Twins of Factory



[Learn more](#)

Customer Cases



Mount Eden, Auckland's iconic landmarks

Land Survey



Hong Kong Ancient Tree Scanning and Modeling

Scan to 3D Model



[Learn more](#)



Historic Building

LCC Model



[Learn more](#)



Lake Scene Lobby

LCC Model



[Learn more](#)

Contact Us

Company Address: XGRIDS LIMITED, SHOP 185 G/F, HANG WAI IND CTR, NO 6 KIN TAI ST TUEN
MUN NT, HONGKONG

Contact Phone: 0755-86548235

Company Website: WWW.XGRIDS.COM

For inquiries, please send an email to:

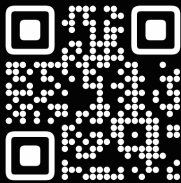
Sales and Partners: sales@xgrids.com

Brand and Business Consulting: enterprise@xgrids.com

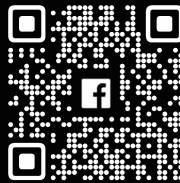
For technical, product, or recruitment information, please
follow our social media accounts:



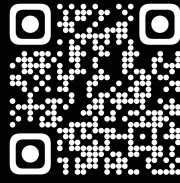
LinkedIn



Youtube



Facebook



X

Copyright belongs to XGRIDS Innovation Technology Co., Ltd. reproduction is
authorized only with permission.